

16 X 20 PERGOLA INSTALLATION INSTRUCTIONS



List of Materials

Column assembly

- 12 threaded rods 8 coupling nuts
- 4 tuscan base and capital
- 4 square columns
- 4 bottom plates for column assembly
- 4 top plates for column assembly
- 12 5/8 nuts and washers
- 8 5/8 lock washers

Beam assembly

- 2 fiberglass beam assemblies (2x10)
- 4 aluminum U channels
- 4 5/8 nuts, lock washers, and washers

Rafter assembly

- 10 fiberglass rafters (2x8)
- 20 9" wood screws

Purlin assembly

- 8 fiberglass purlins (2x4)
- 24 5" screws to attach purlins to the rafters

Tools Required

Driver for screws

Be sure to follow the safety instructions for all the tools

Level

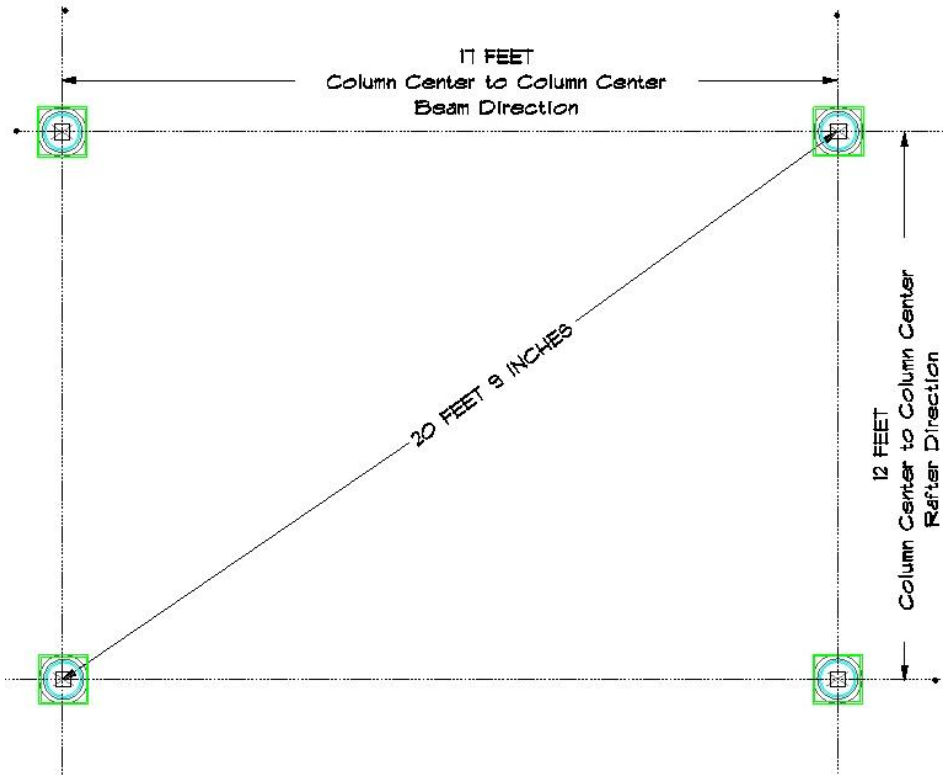
Tape measure

Wrenches

Metal saw (sawzall with metal blade)

Safety glasses

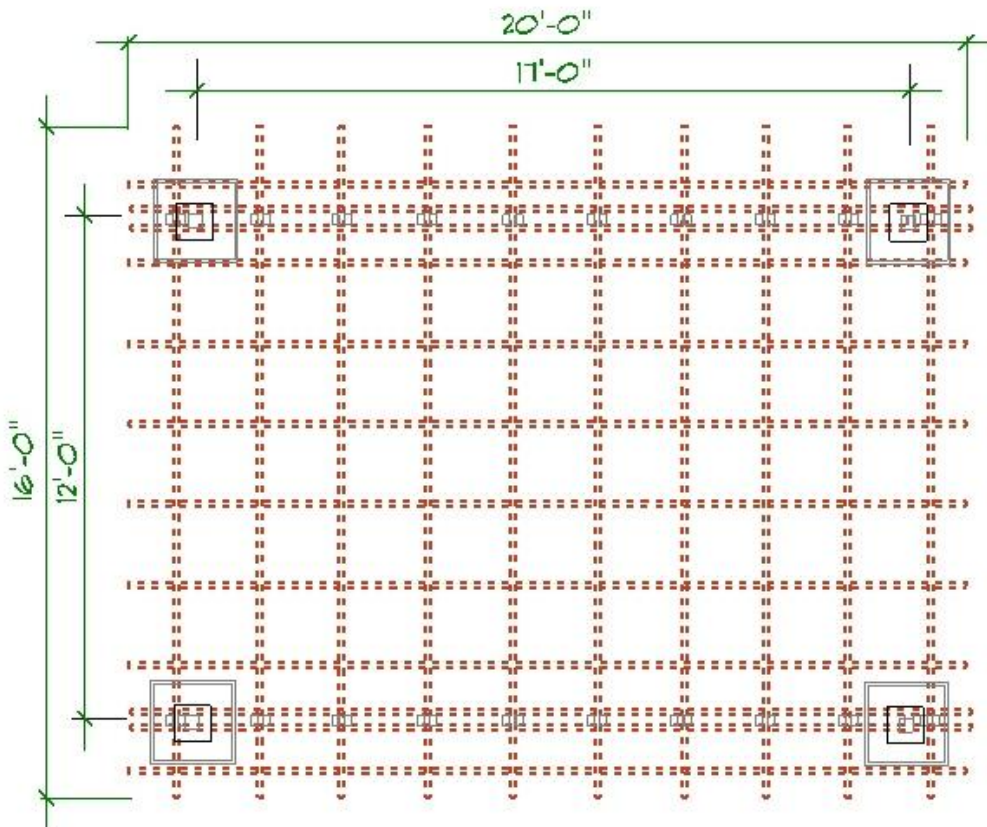
16 X 20 PERGOLA INSTALLATION INSTRUCTIONS COLUMN LAYOUT



The pergola beams are 20 feet long and the pergola rafters are 16 feet long.

In your column layout, the 17 foot dimension should point in the direction that you want the beams to be run.

The 12 foot dimension points in the direction that the rafters will run.

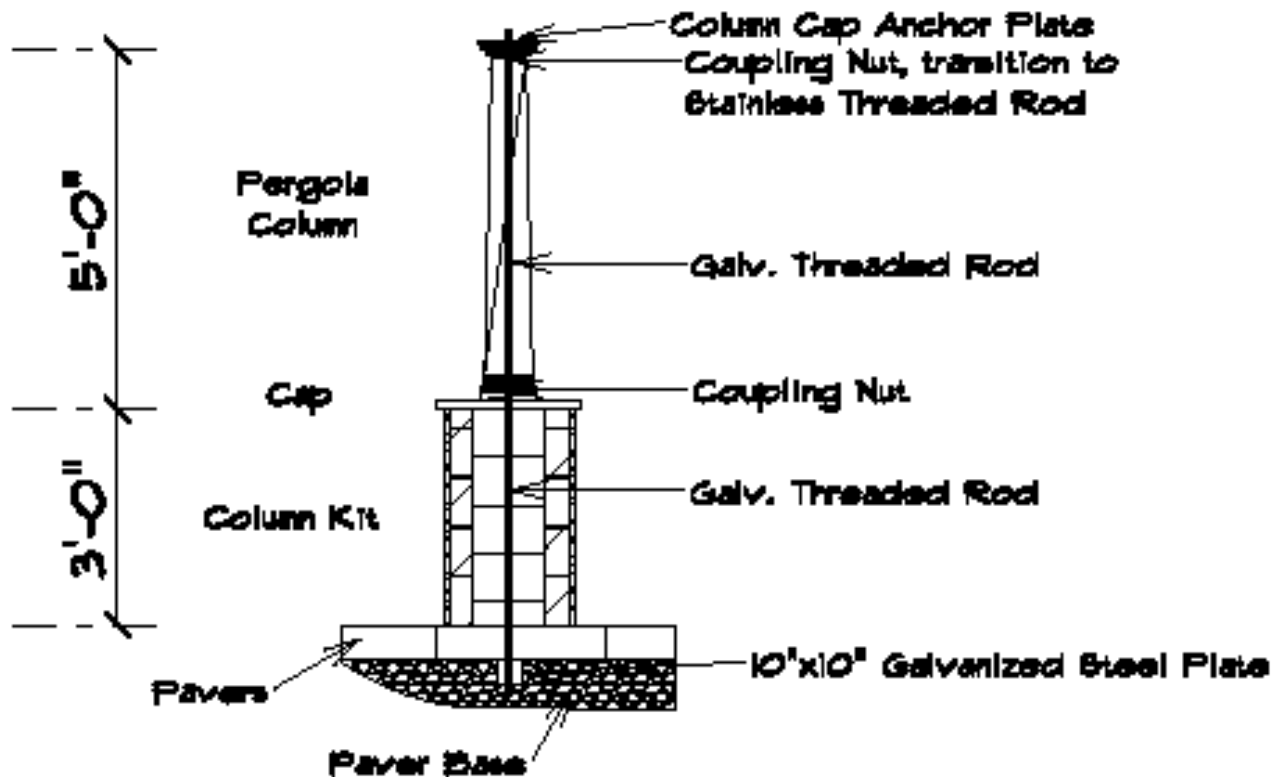


When installed the 20 foot **beam** will extend beyond the 17 foot column centers a foot and a half on each side.

When installed the 16 foot **rafters** will extend beyond the 12 foot column centers 2 feet on each side.

16 x 20 PERGOLA
INSTALLATION INSTRUCTIONS

COLUMN ASSEMBLY With Cambridge Column Kit



Insert threaded rod into steel bottom plate with nut and washer on each side of the plate. Do this for each of the four plates

Position the four plates and rod assemblies as per the footing layout.



Install the Cambridge Column Kit following the instructions from Cambridge Paving Stones.

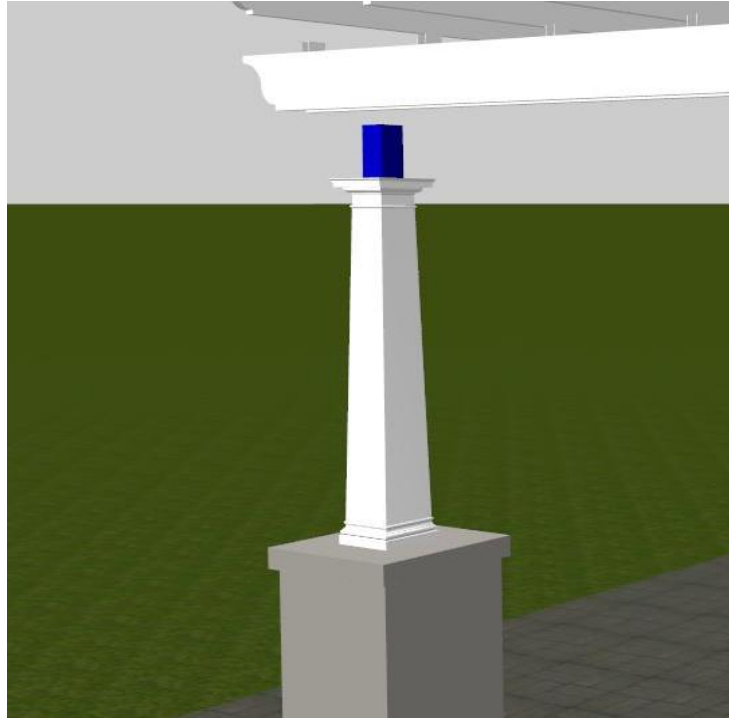


Slide column over threaded rod and attach final rod section.

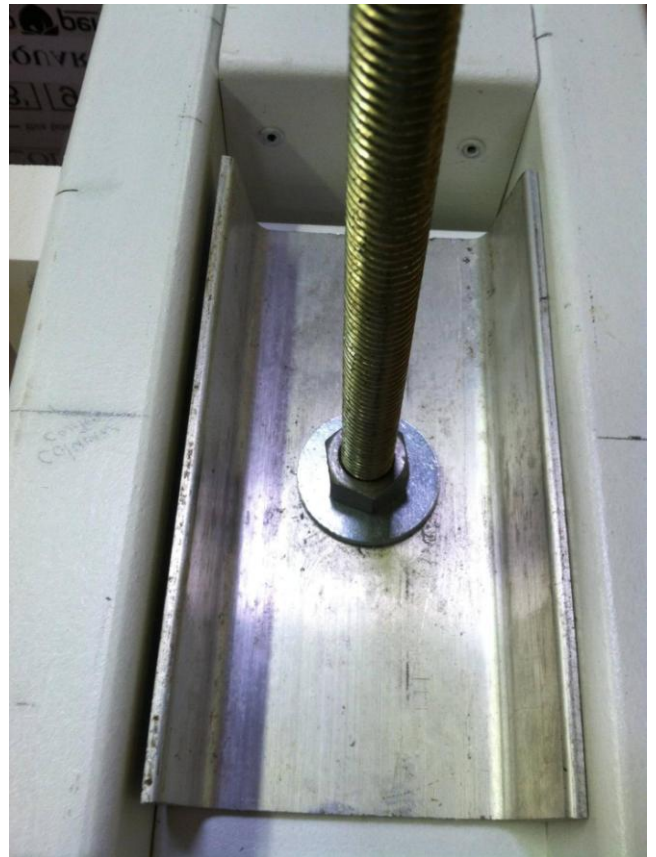
Slide Cap and Base onto column before attaching top plate

Tightly secure top plate using provided nut and washer to complete column assembly.

16x 20 PERGOLA
INSTALLATION INSTRUCTIONS
BEAM INSTALLATION



Seat Beam Assembly over Column Assembly and attach using aluminum bracket

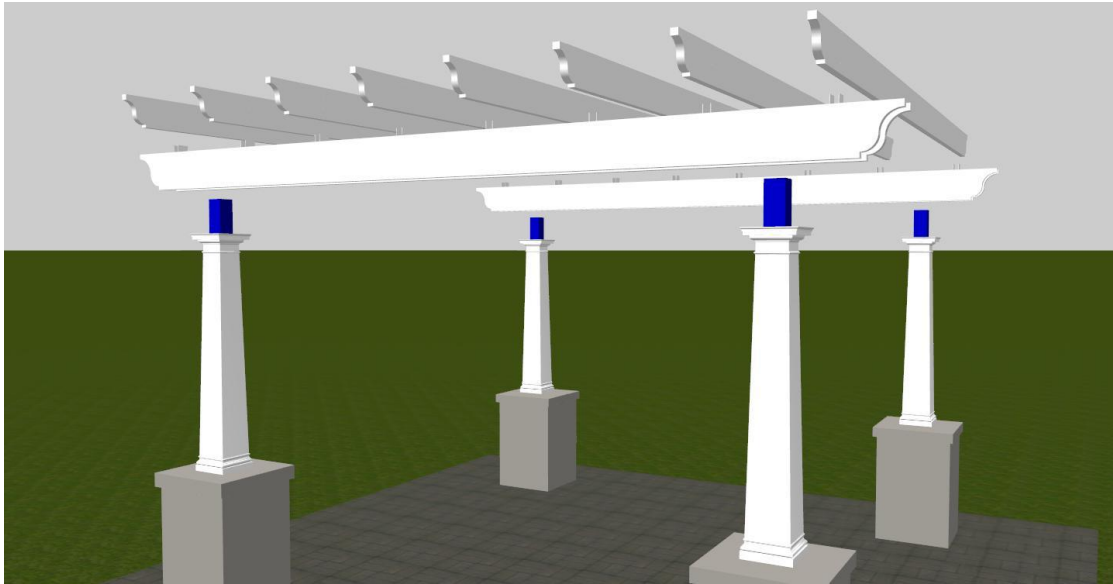


Leave bolt loosely tightened until false beam is installed.

16 x 20 PERGOLA

INSTALLATION INSTRUCTIONS

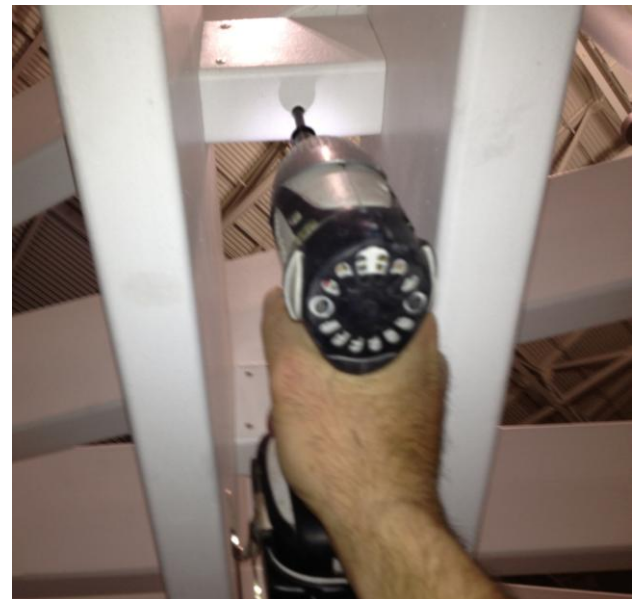
RAFTER INSTALLATION



Align rafters with the spacers between the Beam Assembly.

Secure by putting 9 inch wood screw through pre drilled hole in bottom of spacer, and into the rafter above.

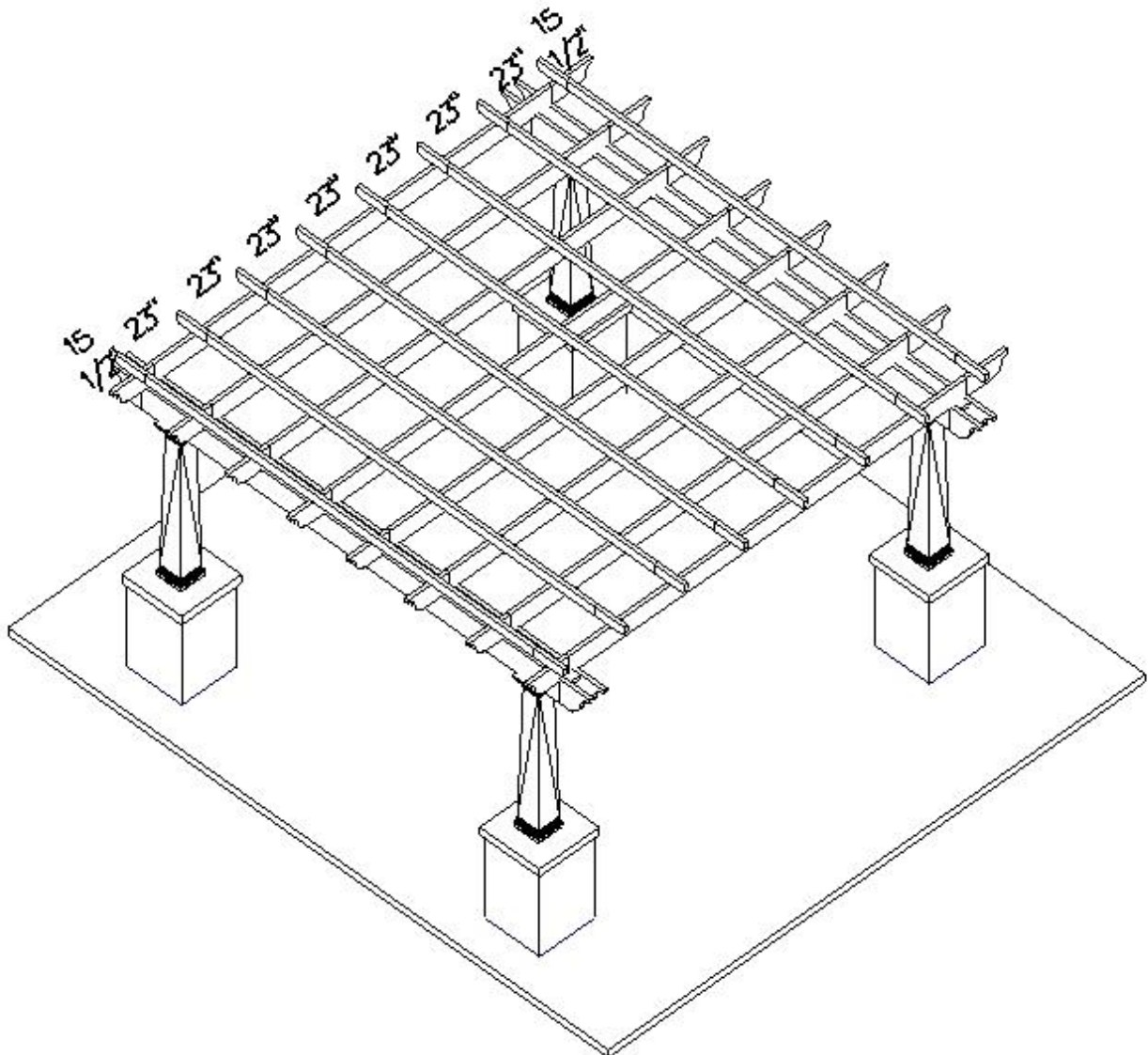
Be careful not to over tighten!



16x20 PERGOLA

INSTALLATION INSTRUCTIONS

PURLIN INSTALLATION



Once the rafters are installed, install the 2x4 Purlins using the 5 inch self drilling screws. Install one screw in each purlin along each of the outside rafters. Use the remaining screws to fasten the middle of the purlins to one of the middle rafters. Space the first purlin 15 and 1/2 inches in from the tip of the rafter. Position each of the remaining purlins at 23 inches from the face of the previous purlin (23 inches equals the width of one purlin plus the distance between the purlins)

Leave the protective plastic on the rafters and purlins until ready to install.